

Sponsorship

Education is the most powerful weapon which you can use to promote change.

The younger generation is increasingly aware of the importance of receiving a good education. They understand that it benefits not just them, but that it also improves the livelihood of their families and community. Charity Begins at Home runs a very successful sponsorship programme for all ages.

Due to school fees being compulsory at Secondary School level it is often impossible for children to continue their education, especially as many are orphans, living with their extended families, who have no means to pay school fees.

Approx. \$600 per year will allow a child to go to secondary school (including school supplies and uniform).

Further Education Fund

The next step into a brighter future for our children and our community!

Charity Begins at Home has recognised that, in spite of their many personal difficulties, hard working pupils should be allowed to realise their educational dreams. We want to focus our efforts on raising the funds to support them through college.

Approx \$2,000 will take a student through a year of college studies.

Left - Philimon's aspirations took him from barman to a qualified nurse and a role model for the young generation in Mfuwe.



THE BUSHCAMP COMPANY
SOUTH LUANGWA NATIONAL PARK ZAMBIA

Interested?

If you would like any further information please ask one of our management team who would be happy to assist.

We can arrange visits to our local schools so you can see our involvement at first hand. We will ensure that it does not impact upon any of your safari experience time!

Would you like to donate to a specific project?

Please speak to one of our managers who will be able to give you more details as to how you can help!

How to contact us...

email - info@bushcampcompany.com

www.bushcampcompany.com/conservation_community

Please visit our 'Charity Begins at Home' Facebook page to keep up to date on our projects -

www.facebook.com/CharityBeginsAtHome12345

www.facebook.com/BushcampCo



...No wheel? Let's use a pumpkin!

Charity Begins at Home looks for children with a positive attitude to life, who can also 'think outside the box'.

THE BUSHCAMP COMPANY
SOUTH LUANGWA NATIONAL PARK ZAMBIA

Luangwa Conservation & Community Fund



Did you know?

Every day that you stay at Mfuwe Lodge, or one of our Bushcamps, you are contributing to our conservation, education and community projects!

In conjunction with our registered charity, **Charity Begins at Home**, we strive to make a difference in the local community with our involvements in a number of beneficial projects.

We invite you to take a few minutes to read about our achievements!



THE BUSHCAMP COMPANY
SOUTH LUANGWA NATIONAL PARK ZAMBIA

Commit to Clean Water



Most of us take it very much for granted that, with the simple act of turning on a tap, clean, safe water will always be available...

Whenever we feel thirsty, or need to bathe, or even water our gardens...it requires little thought or effort... But we are the lucky ones...around half of the world's population lacks this most basic of life's necessities... In the Luangwa valley, local communities are growing rapidly in size, and the majority of villagers still have no convenient access to safe, clean water.

The Bushcamp Company, in conjunction with generous donors, has already embarked on an ambitious project to provide a number of boreholes in various village locations. Each borehole costs around US\$7000 to construct...so to continue with this most vital of community projects we need your help...

Donations can be made to our "Charity Begins At Home" account.



THE BUSHCAMP COMPANY
SOUTH LUANGWA NATIONAL PARK ZAMBIA

A Meal a Day!

*Making sure the basic daily needs of pupils are fulfilled.
1,800 lunches per day!*



Receiving one free, balanced meal per day at school is vital for most of these children. For some, it is the only meal they have each day. It allows them to focus more on their studies at school and is also a great motivator for regular attendance at school.

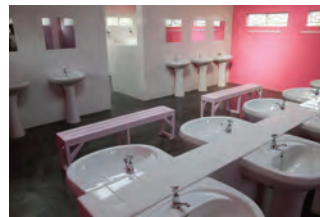
Improving infrastructure



Infrastructure at our local schools is very poor so our focus is on providing the basics such as classrooms, dormitories, and washing facilities so that the pupils have a clean, safe environment in which to study.

So far we have achieved the following, but more is needed!

- 9 classrooms
- 5 dormitories
- 2 wash blocks
- Electricity
- Running water for sanitation



THE BUSHCAMP COMPANY
SOUTH LUANGWA NATIONAL PARK ZAMBIA

Tree Planting

It's the key to maintaining our environment!



Our Goal: To motivate the young generation of Mfuwe to grow trees through fun-filled activities. This should not only improve their environment, but also promote understanding of the reasons for tree conservation. We want children of all ages to appreciate the benefits that come with increasing the number of trees in the Mfuwe area.

Donations

Donations from a pencil upwards make a difference!



We aim to provide the schools with basic stationery requirements which are then utilised by pupils who would otherwise struggle to purchase items for themselves. Donations ranging from pencils and pens to any unwanted toiletries will be very much appreciated.

THE BUSHCAMP COMPANY
SOUTH LUANGWA NATIONAL PARK ZAMBIA